



Gul B14 National Championships

Porthpean Sailing Club 2nd-4th
Sept 2016

SAILING INSTRUCTIONS

DEFINITION

The 'Organising Authority' is defined as Porthpean Club as the event host and the B14 Class Association.

1. RULES

The event shall be governed by the rules as defined in *The Racing Rules of Sailing 2013-16 (RRS)*, the prescriptions of the RYA, the Rules of the B14 Class Association except if changed by the Notice of Race or these Sailing Instructions. In the event of a conflict between any of the aforementioned documents, **these Sailing Instructions shall prevail**. This changes rule 63.7.

2. NOTICES TO COMPETITORS

Notices to competitors will be posted on the official notice board, located outside of the race office.

3. CHANGES TO SAILING INSTRUCTIONS

Any change to the Sailing Instructions will be posted before 0900 on the day it will take effect, except that any change to the Schedule of Races will be posted by 2000 on the day before it will take effect.

Changes will be indicated by the flying of code flag "L".

4. SIGNALS MADE ASHORE

- 4.1. All signals made ashore will be displayed on the mast at the dinghy park.
- 4.2. When the Race Committee wishes the fleet to remain on-shore, Flag R shall be displayed with 2 sound signals. Flag R shall be lowered with one sound signal to signify that the fleet should proceed to the course area. After the lowering of Flag R boats should launch promptly and sail directly to the starting area, and boats doing this will be given adequate time to get to the start area before the warning signal is made.

5. FORMAT OF RACES

The regatta will consist of a single series.

6. SCHEDULE OF RACES

- 6.1 Registration and scrutineering will take place at club house from 1000hrs to 1830hrs on Thursday 1st September 2016 and then from 0930hrs on Friday 2nd September 2016.
- 6.2 The scheduled time of the warning signal for the first race is 1055hrs. The scheduled time of the warning signal for the first race each following day will be 1025hrs.
- 6.3 A competitors briefing will be held at 1000hrs on Friday 2nd September.
- 6.4 10 races are scheduled to be sailed as follows:

Friday 2nd September Races 1, 2, 3 and 4
Saturday 3rd September Races 5, 6, 7 and 8
Sunday 4th September Races 9 & 10

6.5 Discards. 1-3 races – no discard. 4 - 8 races – 1 discard. 9 or 10 races – 2 discards.

6.6 The last race on Sunday will not be started later than 13.30

7. CLASS FLAGS

The Class Flag will be code flag “F”

8. RACING AREA

The racing area will be St Austell Bay.

9. THE COURSE

9.1. The diagram in Attachment A shows the course, including the course signals, the order in which the marks are to be passed and the side on which each mark is to be left.

9.2. The approximate magnetic compass bearing from the Committee Boat to Mark 1 **may** be displayed on the side of the Committee Boat.

10. MARKS (CONFIRMING MARK SHAPE & COLOUR)

10.1. Marks 1, 2P and 2S, shall be orange inflatable buoys.

10.2. Mark 1a and Finish Mark 3f shall be yellow inflatable cylinder mark.

10.3. The Start mark shall be a large white “Tribute” Mark (SM on the course diagram) and the start line inner distance mark (ID on the course diagram), if used, shall be a large white “Tribute” Mark.

11. THE START

11.1. Races shall be started using rule 26.

11.2. The start line will be between the mast on the committee boat displaying an orange flag and the start mark.

11.3. A boat starting later than 5 minutes after her starting signal shall be scored Did Not Start without a hearing. This changes rules A4 and A5.

12. CHANGE OF THE NEXT LEG OF THE COURSE

12.1 To change the next leg of the course, the race committee may move the original marks (or the finishing line) to a new position.

12.2 If the direction of the leg will be changed, the signal shall be the display of flag C with repetitive sounds, a green flag for a change to starboard or a red flag for a change to port and if possible the new compass bearing. This alters RRS 33a.

13. THE FINISH

The finish line will be between the mast on the committee boat displaying a blue flag and the finishing mark (for a downwind finish), or if the course is to be shortened at Mark 1 (upwind finish), between a staff on a Boat bearing a blue flag and Mark 1. The course will not be shortened at any mark other than the Finish Mark or Mark 1.

14. PENALTY SYSTEM

- 14.1. Rule 44.1 is changed so that the Two-Turns Penalty is replaced by the One-Turn Penalty.
- 14.2. When an incident occurs where a penalty applies while the head of the spinnaker is above the main-boom gooseneck, the penalty may be taken immediately after the next time the head of the spinnaker is lowered below the main-boom gooseneck, but shall always be taken prior to rounding the next mark or crossing the finishing line. This changes rule 44.2.
- 14.3. Touching a mark (other than a starting or finishing line mark) with any part of the boat or crew shall not constitute an infringement of the Rules. Manhandling a mark which results in an advantage is not allowed and a boat so doing shall promptly retire. If a boat touches a start or finish mark they shall complete a one-turn penalty as described in RRS 44.2. This changes RRS 31.

15. TIME LIMITS AND TARGET TIMES

- 15.1. Time limits and target times for the lead boat are as follows:
 - Time limit :- 70 min.
 - Target Time:- 45 min
- 15.2. Boats failing to finish within 20 minutes after the first boat sails the course and finishes will be scored Did Not Finish without a hearing. Notwithstanding this, the race committee may, at their discretion, finish stragglers at the previous mark. If this is done, then any boats that have already rounded this mark before the finishing of stragglers commences AND do not make it to the finish for whatever reason (eg capsize, gear failure, becalmed etc) will be awarded a finish position one place higher than the first of the stragglers. This changes rules 35, A4 and A5.

16. PROTESTS AND REQUESTS FOR REDRESS

- 16.1. Protest forms are available at the race office, located in the clubhouse. Protests and requests for redress or reopening shall be delivered there within the appropriate time limit.
- 16.2. The protest time limit is 2-hours after the last boat has finished the last race of the day. The same time limit applies to protests by the race committee and protest committee about incidents they observe in the racing area and to requests for redress. This changes RRS Rules 61.3 and 62.2.
 - The time limit may be extended at the discretion of the Race Committee.
- 16.3. Notices will be posted no later than 30 minutes after the protest time limit to inform competitors of hearings in which they are parties or named as witnesses.
- 16.4. Notices of boats protested by the race committee or protest committee will be posted to inform boats under rule 61.1(b).
- 16.5. Breaches of instructions 18, 21, 22 or 23 will not be grounds for protest by another boat. This changes rule 60.1(a). Penalties for these breaches may be less than disqualification if the Protest Committee so decides.
- 16.6. On the last scheduled day of racing a request for reopening a hearing shall be delivered:
 - (a) Within the protest time limit if the requesting party was informed of the decision on the previous day.
 - (b) No later than 30 minutes after the requesting party was informed of the decision on that day. This changes rule 66.
- 16.7. On the last scheduled day of racing a request for redress from a protest committee decision shall be delivered no later than 30 minutes after the decision was posted. This changes rule 62.2.

17. SCORING

17.1. 3 races are required to be completed to constitute a series.

17.2. (a) When fewer than 4 races have been completed, a boat's series score will be the total of her race scores.

(b) When from 4 to 8 races have been completed, a boat's series score will be the total of her race scores excluding her worst score.

(c) When 9 or more races have been completed, a boat's series score will be the total of her race scores excluding her two worst scores.

18. SAFETY REGULATIONS

18.1. A boat that retires from a race shall notify the race committee before leaving the race area.

18.2. All crews must wear personal flotation devices while afloat. Wet suits and dry suits are not personal flotation devices. Flag Y will not be displayed. This changes rule 40

18.3. (CONFIRM TALLY ARRANGEMENTS) Each boat is required to 'tally' on before going afloat and 'tally' off once returned to shore. The tally board will be located by the slipway. The penalty for failure to comply with this instruction will be 5 points added to the boat's series score for each infringement, without a hearing. A list of boats that have infringed will be posted on the official notice board before the protest time limit. This changes rule 63.1.

19. REPLACEMENT OF CREW OR EQUIPMENT

19.1. Substitution of competitors will not be allowed without prior written approval of the Race Committee.

19.2. Substitution of damaged or lost equipment will not be allowed unless authorised by the Race Committee. Requests for substitution shall be made to the committee at the first reasonable opportunity.

19.3 Distinguishing Numbers – at its sole discretion the Race Committee may on receipt of a written request permit a boat to use sails carrying a distinguishing number other than that required by RRS Appendix G1.1(c). This changes RRS Rule 77. Under no circumstances shall a boat be permitted to use the sail number of another boat already competing in the event.

20. EQUIPMENT AND MEASUREMENT CHECKS

A boat or equipment may be inspected at any time for compliance with the class rules and sailing instructions. A boat can be instructed by a race committee equipment inspector or measurer to proceed immediately to a designated area for inspection.

21. ADVERTISING

Boats shall display advertising as required and supplied by the B14 Class Association.

22. SUPPORT BOATS

22.1. Team leaders, coaches and other support personnel shall stay outside areas where boats are racing from the time of the preparatory signal until all boats have finished or retired or the race committee signals a postponement, general recall or abandonment.

22.2. Support boats shall be marked with the sail number(s) of the competitor(s) that they support.

23. RUBBISH DISPOSAL

Boats shall not put rubbish in the water. Trash may be placed aboard support and race committee boats.

24. RADIO COMMUNICATION

While on the water, a boat shall not carry equipment capable of making radio transmissions or receiving radio communications, except for equipment provided by the organising authority. This restriction also applies to mobile telephones. This amends Class Rule C.5.2(b)

25. PRIZES

Prizes will be awarded for the Championship. Further prizes may be awarded dependant on entries.

14. RISK STATEMENT

14.1 RRS 4 of the Racing Rules of Sailing states: "The responsibility for a boat's decision to participate in a race or to continue racing is hers alone."

Sailing is by its nature an unpredictable sport and therefore inherently involves an element of risk. By taking part in the event, each competitor agrees and acknowledges that:

- a) They are aware of the inherent element of risk involved in the sport and accept responsibility for the exposure of themselves, their crew and their boat to such inherent risk whilst taking part in the event;
- b) They are responsible for the safety of themselves, their crew, their boat and their property whether afloat or ashore;
- c) They accept responsibility for any injury, damage or loss to the extent caused by their own actions or omissions;
- d) Their boat is in good order, equipped to sail in the event and they are fit to participate;
- e) The provision of a race management team, patrol boats and other officials and volunteers by the event organiser does not relieve them of their own responsibilities;
- f) The provision of patrol boat cover is limited to such assistance particularly in extreme weather conditions, as can be practically provided in the circumstances.

27. INSURANCE

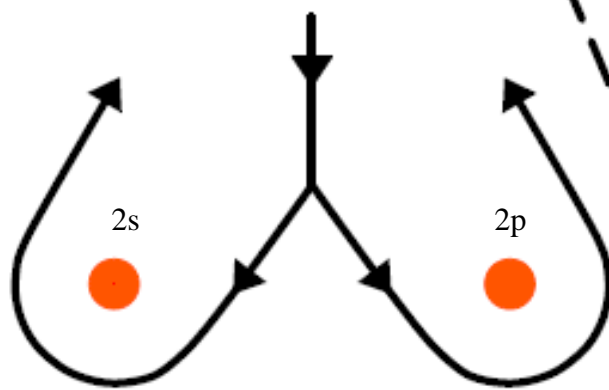
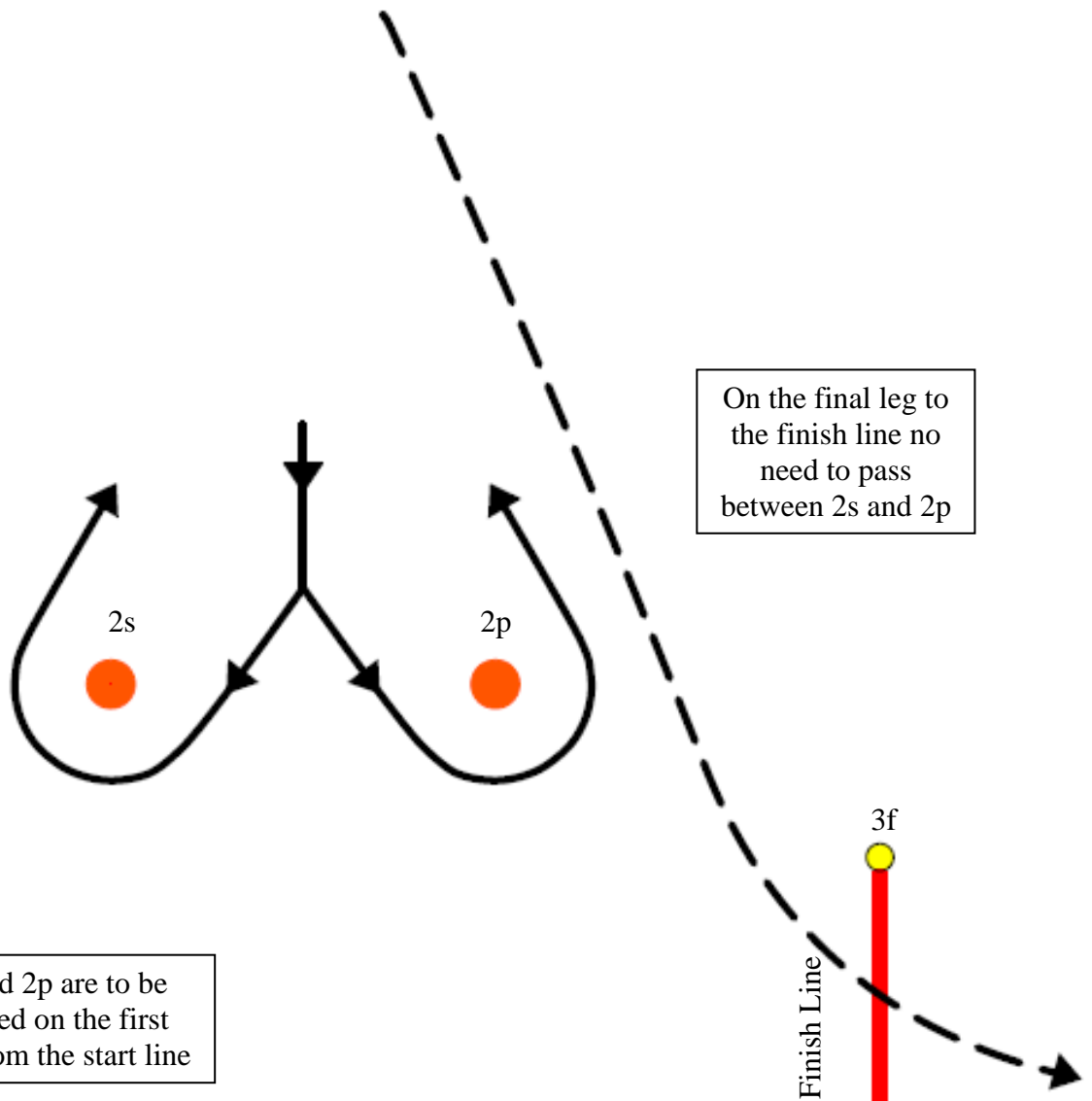
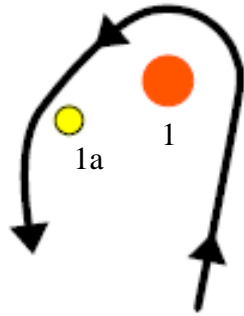
Each participating boat shall be insured with valid third-party liability insurance with a minimum cover of £2 million per event.

28. RIGHTS TO USE NAME AND LIKENESS

By participating in this event, competitors automatically grant to the organising authority and the event sponsors the right, in perpetuity, to make, use, and show, at their discretion, any photography, audio and video recordings, and other reproductions of them made at the venue or on the water from the time of their arrival at the venue, until their final departure, without compensation.

ATTACHMENT A: COURSE

Course: 1, 1a, 2p or 2s, 1, 1a, 2p or 2s, 1, 1a, 3f



2s and 2p are to be ignored on the first beat from the start line

Start Line

SM

ID

Guard boat